

# WELCOME!

## PUBLIC MEETING OPEN HOUSE

*Rapid City Area MPO Metropolitan Transportation Plan*





# WE WANT TO HEAR FROM YOU!

THERE ARE SEVERAL WAYS YOU CAN STAY INVOLVED AND PROVIDE YOUR FEEDBACK ON THE PROJECT INCLUDING:



Submit a written comment card and leave in the comment box tonight.



Submit a written comment via mail or email by ***Friday, April 4, 2025.***



Speak with project staff and share your feedback tonight.



Use the interactive map comment tool on the project website.



View project information and announcements on the project website at: ***[www.RapidTrip2050.com](http://www.RapidTrip2050.com)***



**VISIT THE  
PROJECT  
WEBSITE TO:**



*Learn more  
about the  
planning study*



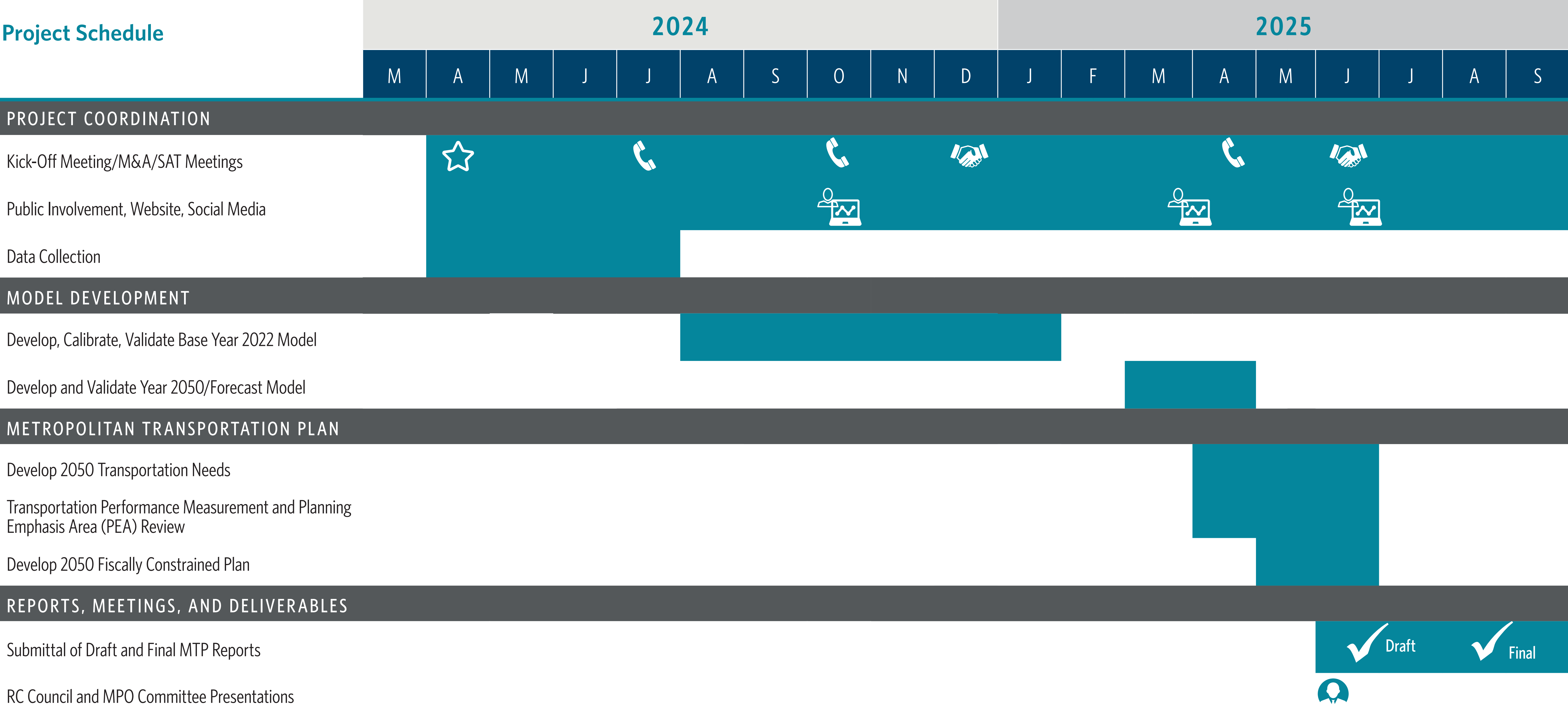
*View upcoming  
public input  
opportunities*



*Submit  
comments and  
contact the  
project team*

***[www.RapidTrip2050.com](http://www.RapidTrip2050.com)***

# STUDY SCHEDULE



SYMBOL KEY

 Kick-Off Meeting/M&A

 Public Meeting

 SAT Call

 Project Milestones

 SAT Meeting

 MPO Policy Boards (RC City CAC, TCC, and EPC)



# SAFETY IN THE RAPID CITY REGION

**Safety emphasis areas:** Data-driven analysis identified that safety strategies must focus on these safety areas to create a safer multi-modal transportation system.



BETWEEN 2019 AND 2023, THE REGION HAS EXPERIENCED:



7,996 CRASHES

31 FATALITIES

That is one person impacted by a crash every

5.5 HOURS

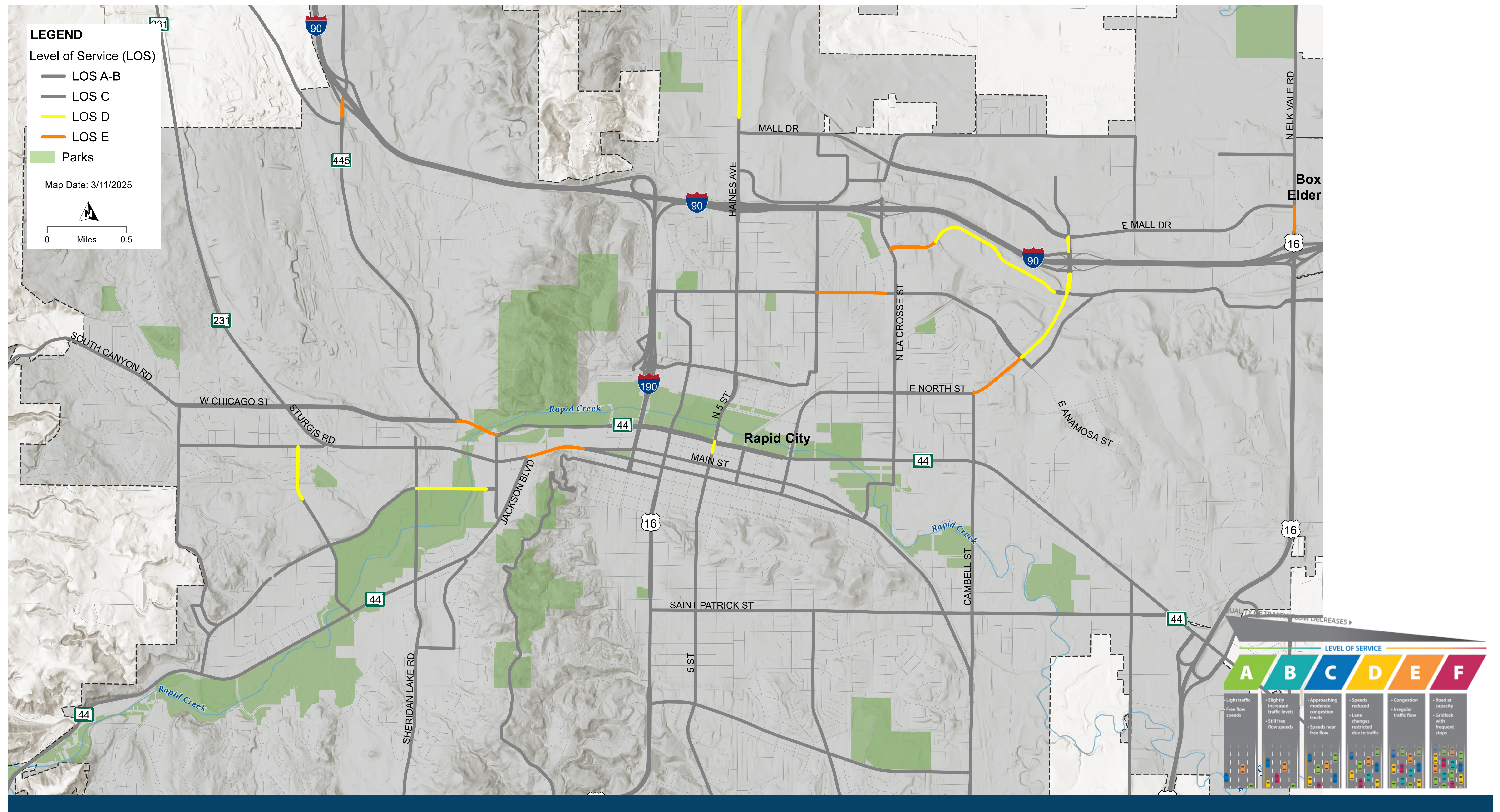


& 203 SERIOUS INJURIES



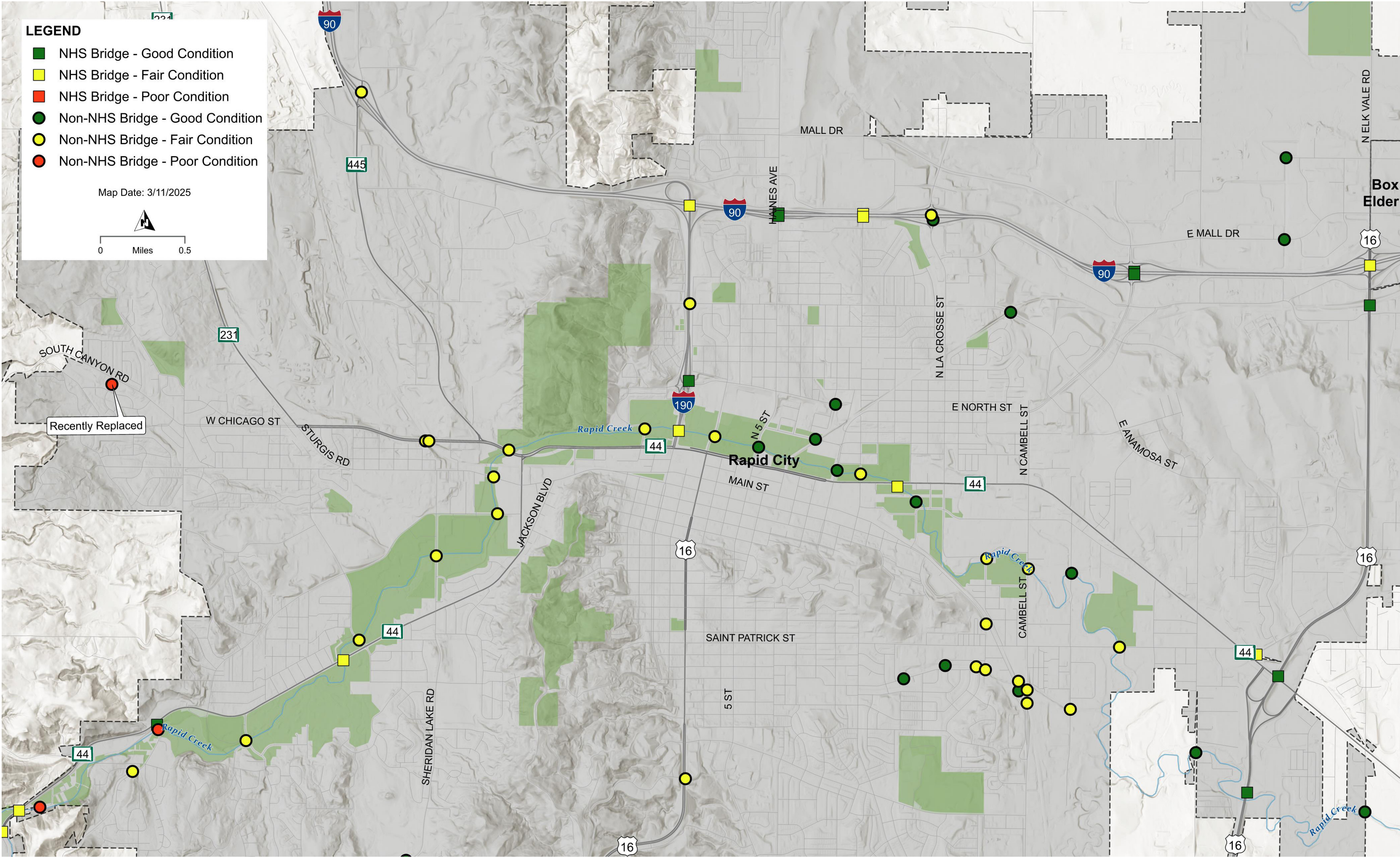
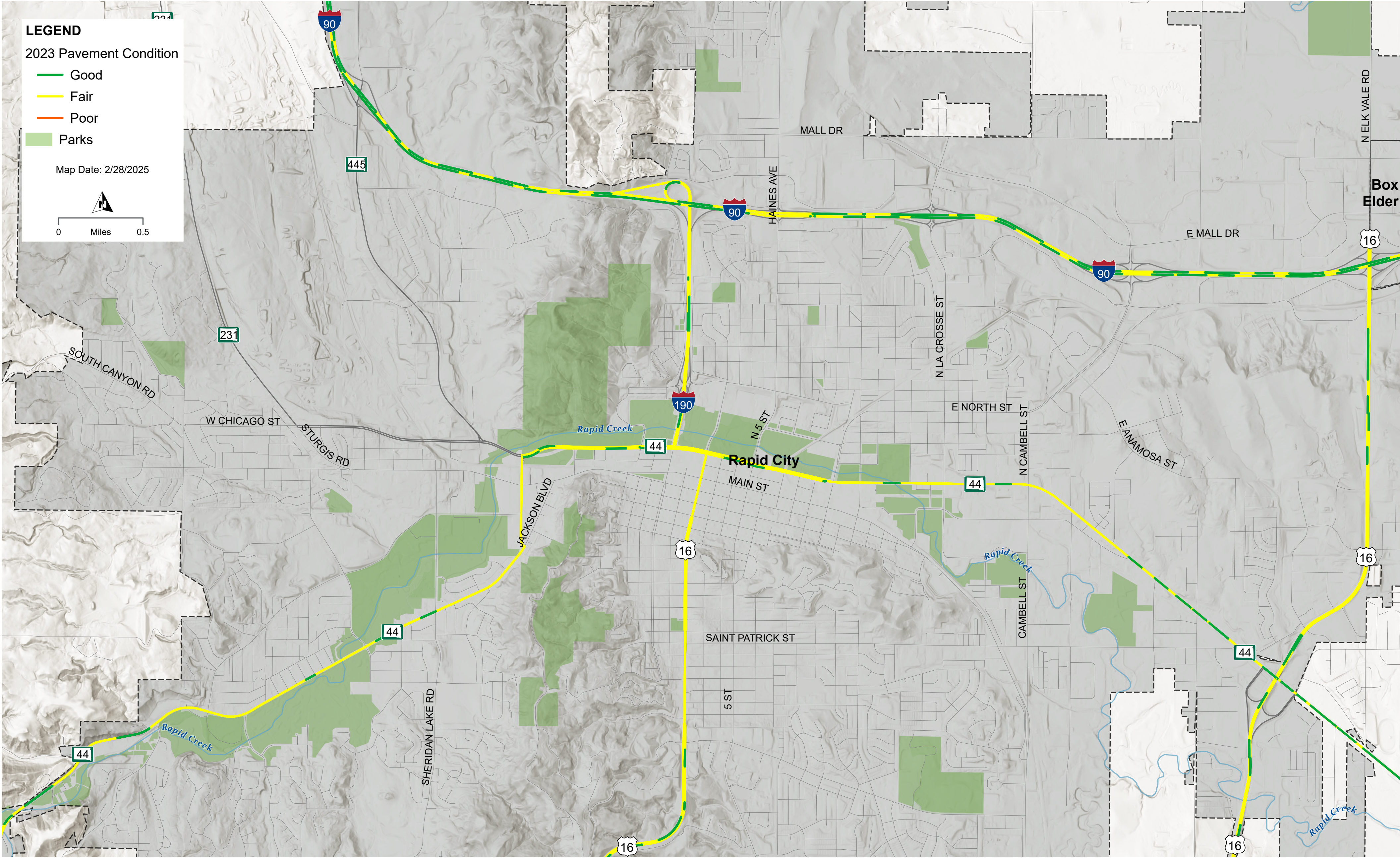


Areas with recurring congestion were identified to understand current issues related to traffic operations.



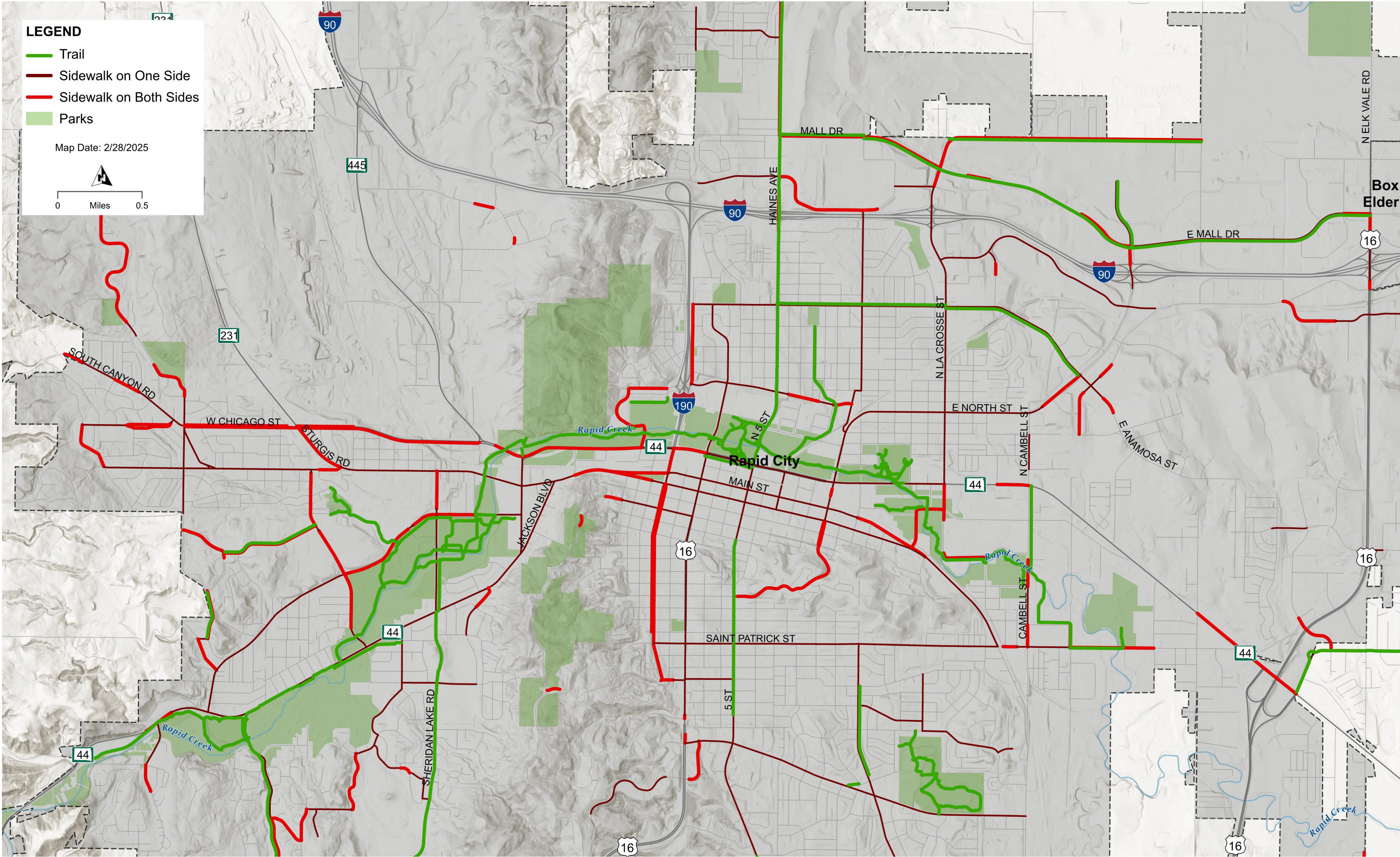
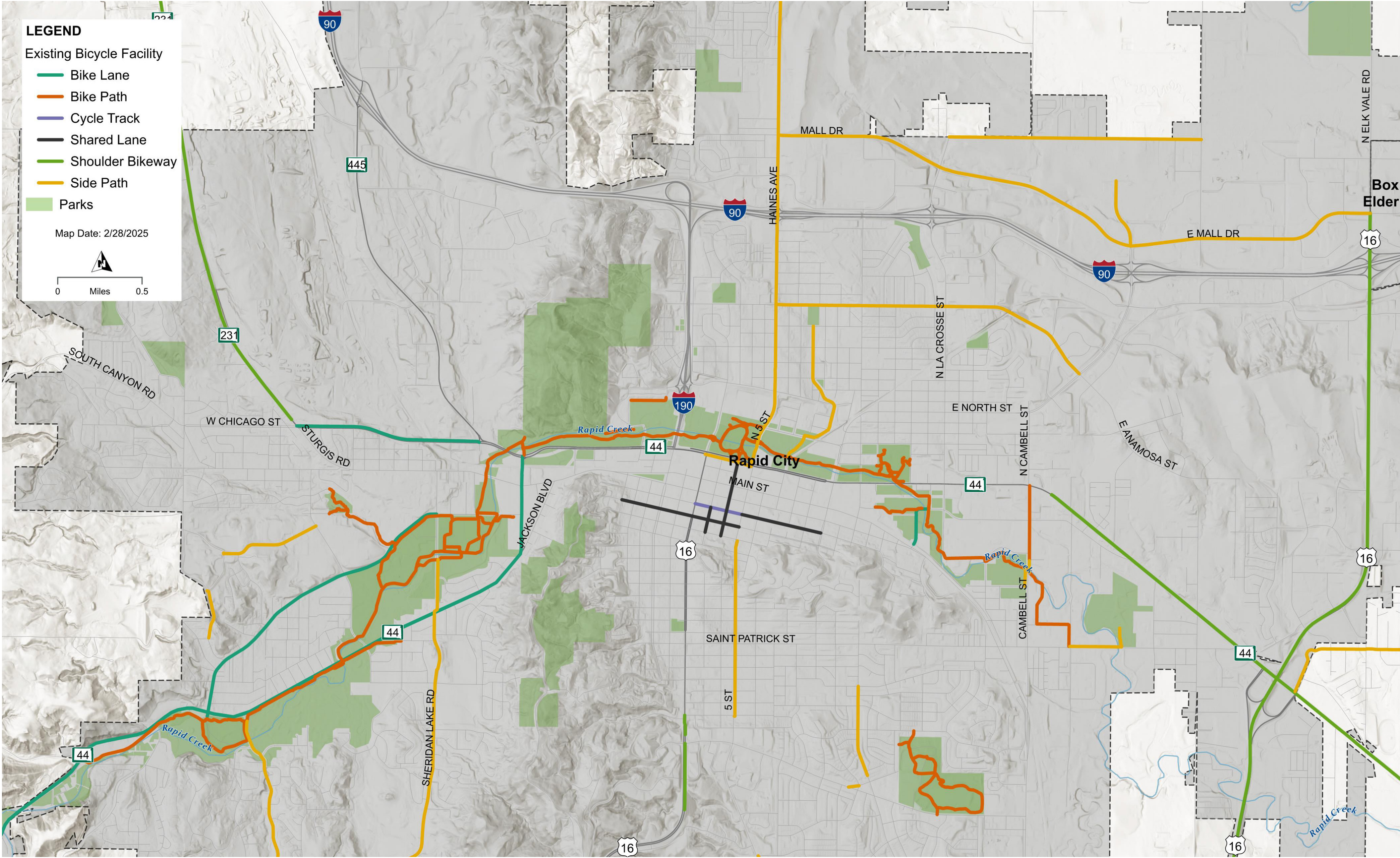


# CONDITION OF THE REGION'S INFRASTRUCTURE





# BICYCLE AND PEDESTRIAN NETWORK





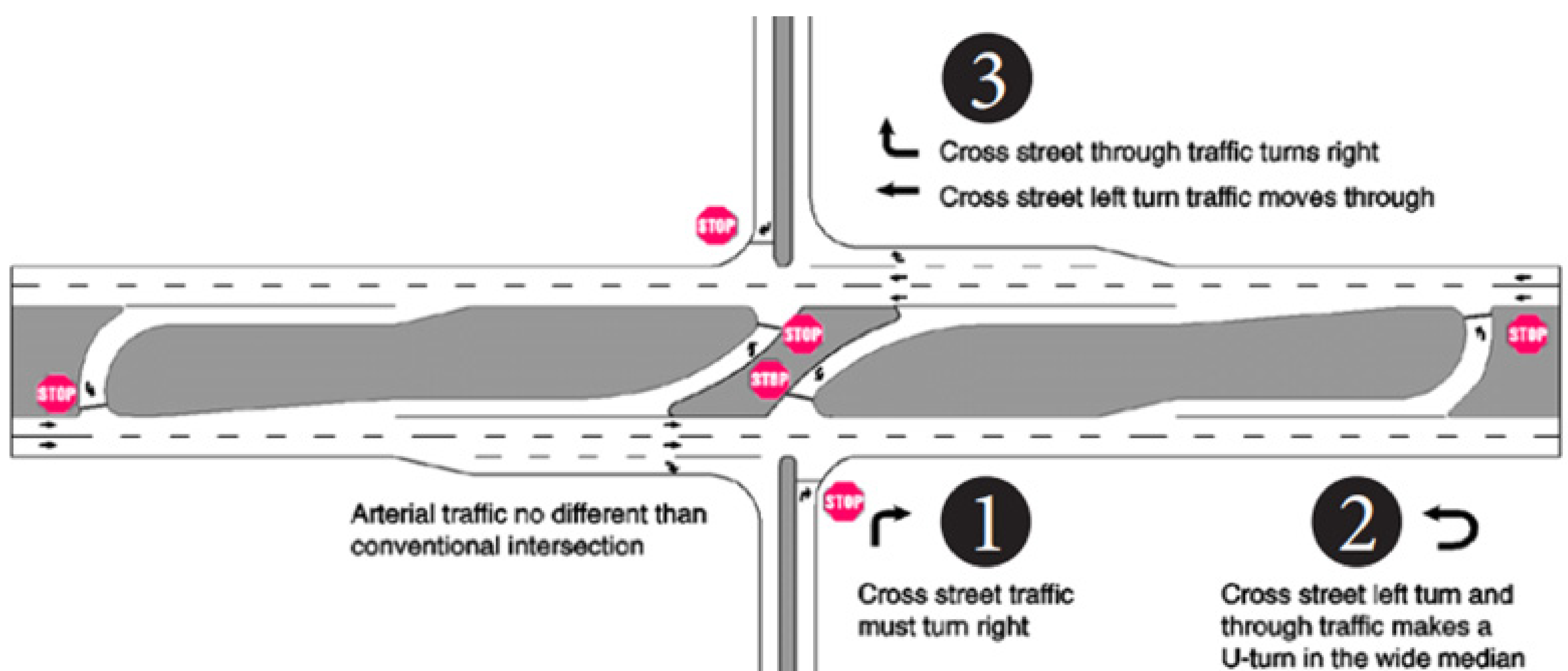
## Safety Strategies – Intersection Treatments



Signalized Intersections, turn lanes, controlled access, signal timing improvements



Roundabouts



Alternative Intersections - Reduced Conflict Intersection (RCI) or Michigan Left Turns



## Traffic Operations Strategies



Additional Travel Lanes or Turn Lanes

Source: rcgov.org



Technological solutions such as Intelligent Transportation Systems (ITS), travel demand management, traveler information services



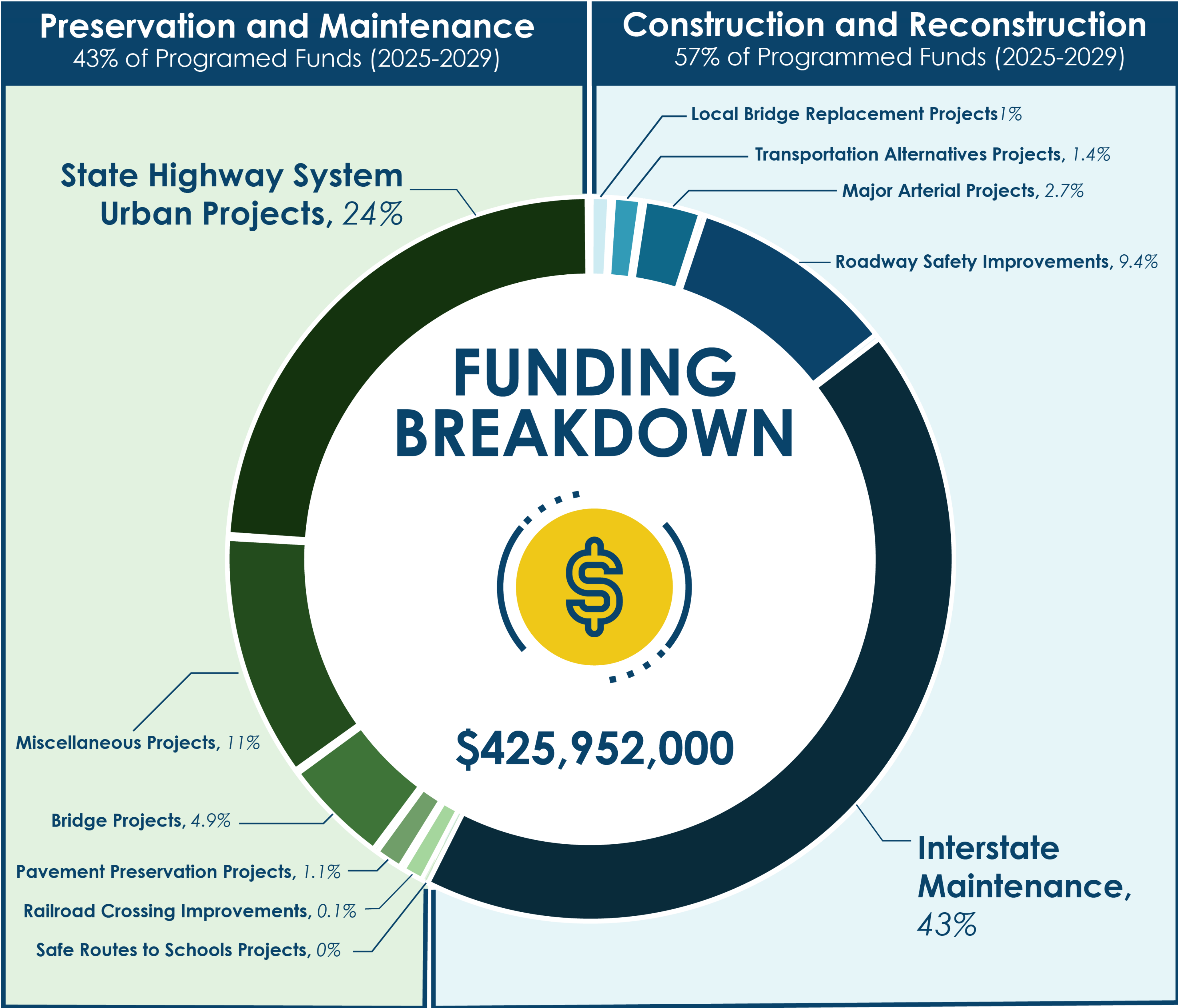
Complete Streets



## System Preservation



Prioritization of future revenues for managing and preserving existing assets such as pavements and bridges while limiting investment in new infrastructure





## Bicycle and Pedestrian Network



Network Expansion



Crossing Improvements



Network Preservation